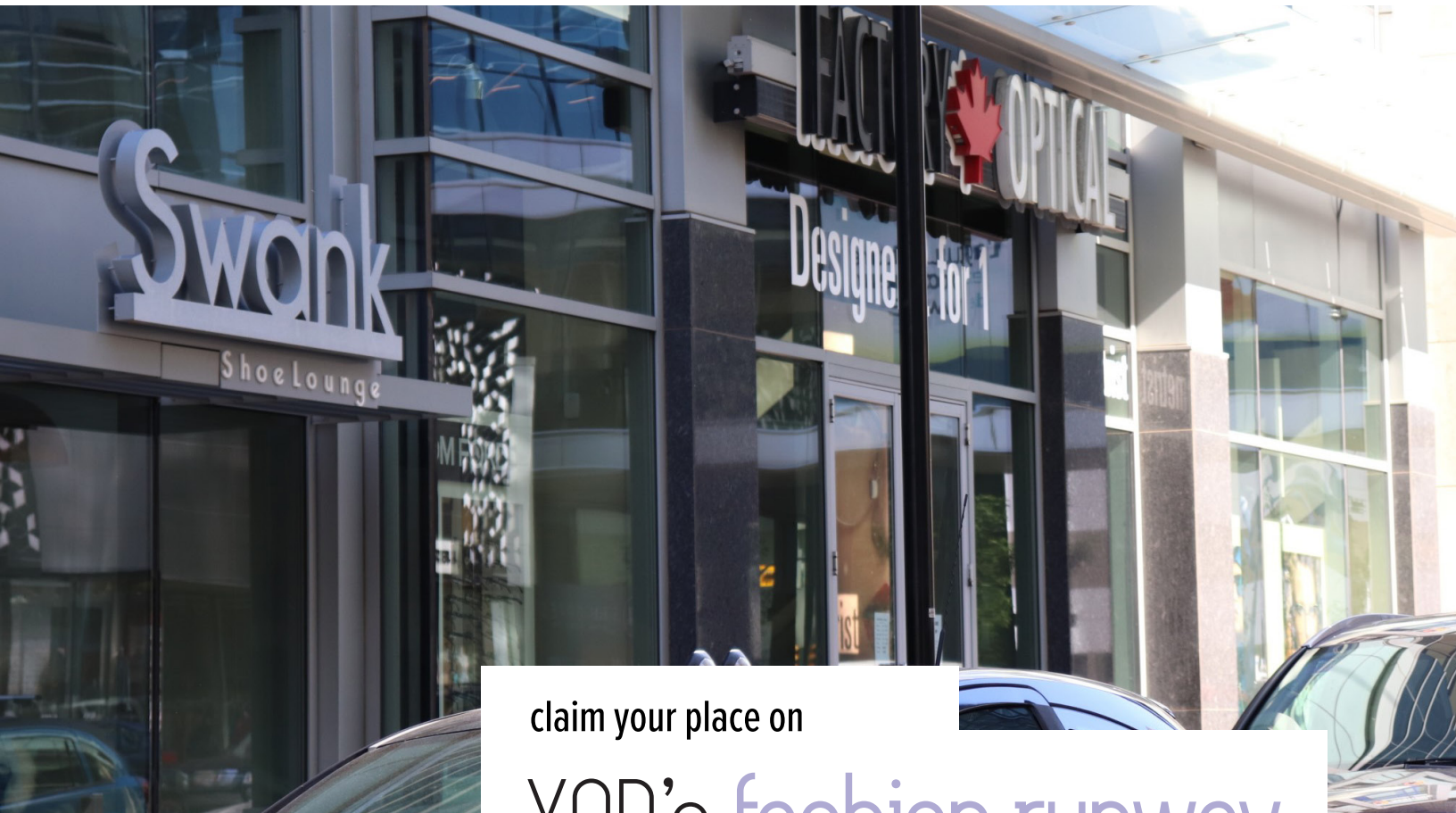




SHOPPES

ON HAMILTON



claim your place on

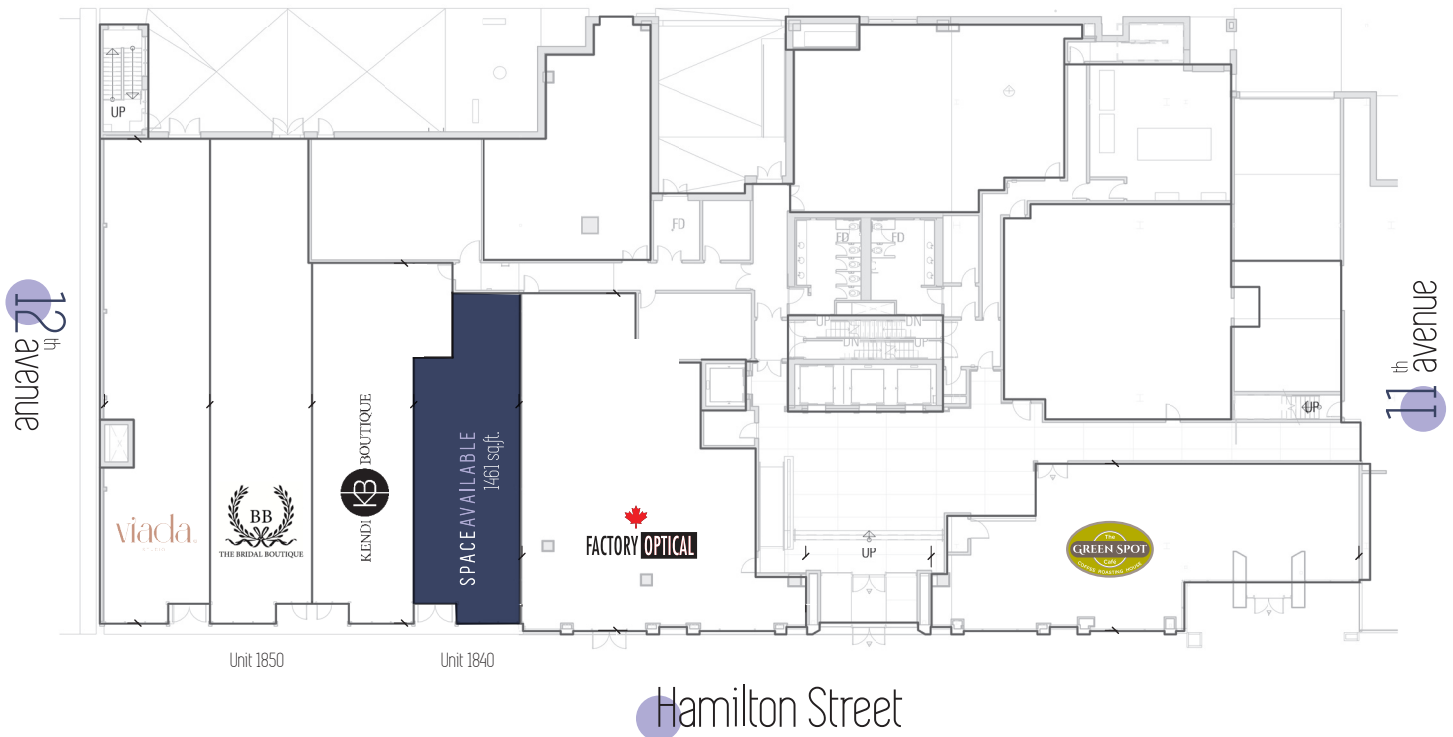
YQR's fashion runway.



Available units

Unit 1850 - 1,972 sq.ft.

Unit 1841 - 1,461 sq.ft.



Property features

- + Newer construction with modern storefronts
- + 20' of store frontage
- + 16' ceiling heights
- + Rear-loading doors
- + Industry-leading mechanical system
- + Enhanced sidewalks and streetscape

Location features

- + Located on Hamilton Street between 11th & 12th Avenue, one of Regina's most established retail corridors.
- + Adjacent to Regina's premier shopping centre destination - the Cornwall Centre. 550,000 sq.ft. regional mall occupying over 90 stores that annually attracts over 8.4 million shoppers to downtown Regina
 - o Vehicular traffic of 4,100/day
 - o Pedestrian traffic of 3,000/day
- + Convenient access to Regina's climate controlled pedway system which connects nine downtown office buildings, Casino Regina, and the Cornwall Centre
- + 4 million sq.ft. of office space in the surrounding area
- + Downtown day-time population, approximately 32,000
- + 20 thriving licensed full-service pubs and restaurants
- + 10 nearby hotels that welcome over 500,000 guests annually
- + Adjacent to City Square Plaza and Victoria Park - Regina's premiere outdoor cultural events facility and hub of pedestrian linked activity.

Neighbouring retailers

Starbucks
Lululemon
FYI Optical

 Viada Studio
 Jessica Bridal
 Deluxe Tailors
 Kendi Boutique
 Factory Optical

Cornwall Optical
Olivers Menswear

 The Green Spot Cafe
 Zoë Shoes + Objects
 Dean Renwick Designs
 NWL Contemporary Dresses
 Colin O'Brian Man's Shoppe

90+ stores located in the Cornwall Centre.





 @shoppesonhamilton

For leasing inquiries:

Ryann Braaten
Leasing Manager, Harvard Developments Inc.
306.777.0690 \ \ rbraaten@harvard.ca