



SHOPPES

ON HAMILTON



claim your place on

YQR's fashion runway.

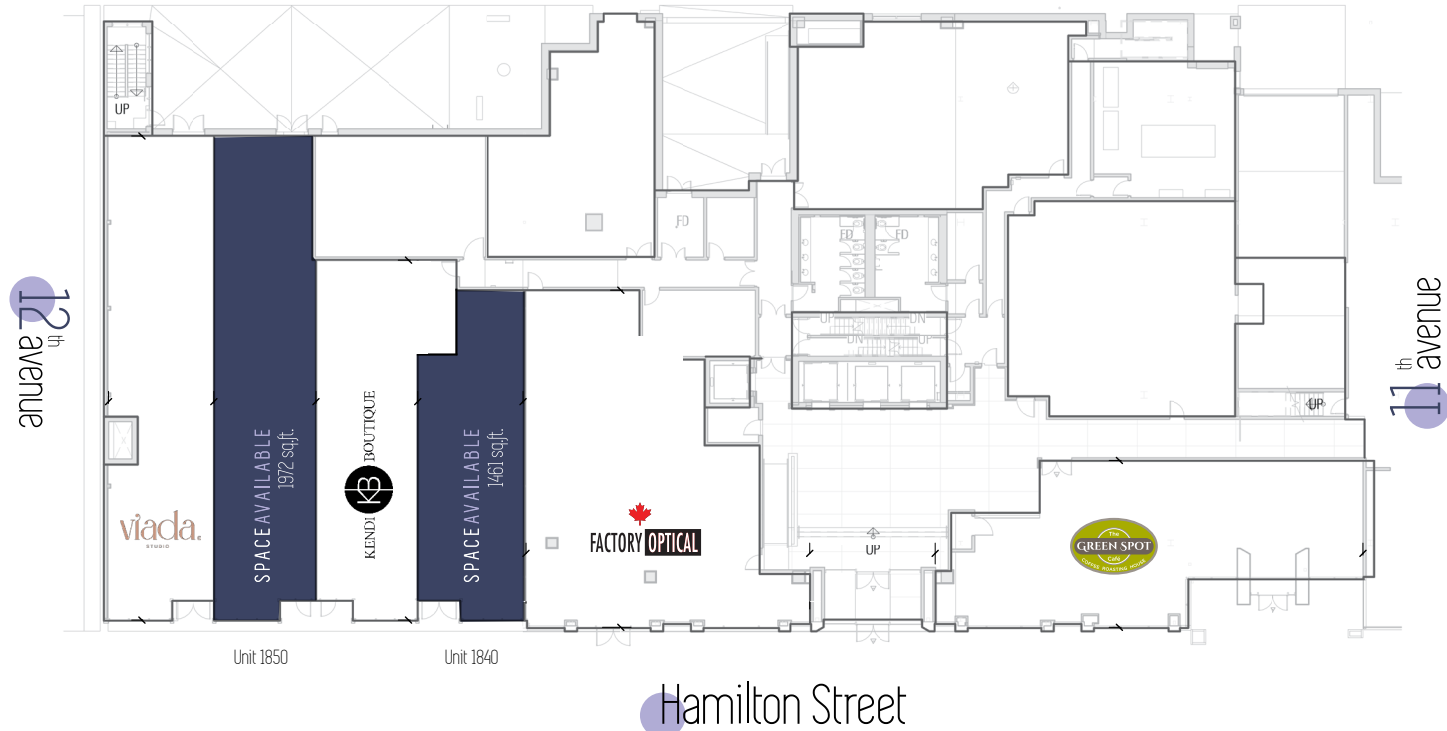


HARVARD
Developments Inc.
— A HILL COMPANY —

Available units

Unit 1850 - 1,972 sq.ft.

Unit 1841 - 1,461 sq.ft.



Neighbouringretailers

- | | |
|------------------------|-----------------------------------|
| Starbucks | Cornwall Optical |
| Lululemon | Olivers Menswear |
| FYI Optical | <i>The Green Spot Cafe</i> |
| <i>Viada Studio</i> | <i>Zoe Shoes + Objects</i> |
| Jessica Bridal | <i>Dean Renwick Designs</i> |
| Deluxe Tailors | NWL Contemporary Dresses |
| <i>Kendi Boutique</i> | <i>Colin O'Brian Man's Shoppe</i> |
| <i>Factory Optical</i> | |

90+ stores located in the Cornwall Centre.



Propertyfeatures

- + Newer construction with modern storefronts
- + 20' of store frontage
- + 16' ceiling heights
- + Rear-loading doors
- + Industry-leading mechanical system
- + Enhanced sidewalks and streetscape

Locationfeatures

- + Located on Hamilton Street between 11th & 12th Avenue, one of Regina's most established retail corridors.
- + Adjacent to Regina's premier shopping centre destination - the Cornwall Centre. 550,000 sq.ft. regional mall occupying over 90 stores that annually attracts over 8.4 million shoppers to downtown Regina
 - o Vehicular traffic of 4,100/day
 - o Pedestrian traffic of 3,000/day
- + Convenient access to Regina's climate controlled pedway system which connects nine downtown office buildings, Casino Regina, and the Cornwall Centre
- + 4 million sq.ft. of office space in the surrounding area
- + Downtown day-time population, approximately 32,000
- + 20 thriving licensed full-service pubs and restaurants
- + 10 nearby hotels that welcome over 500,000 guests annually
- + Adjacent to City Square Plaza and Victoria Park - Regina's premiere outdoor cultural events facility and hub of pedestrian linked activity.





For leasing inquiries:

Ryann Braaten

Leasing Manager, Harvard Developments Inc.
306.777.0690 \ rbraaten@harvard.ca



@shoppesonhamilton