

MOSAIC TOWER AT HILL CENTRE III

2010 12TH AVE. | REGINA, SK



As one of Regina's newest office towers, Mosaic Tower at Hill Centre III is a 229,000 leasable square foot, 21 storey Class "A" office building situated in the heart of downtown. With a focus on sustainability, Mosaic Tower at Hill Centre III is GOLD Certified with LEED and BOMA Best for its energy efficiency and eco-friendly design. Tenants appreciate the numerous amenities which include a fitness centre, conference centre, rooftop patio, public art feature and onsite underground parking.

BUILDING HIGHLIGHTS

- Exterior glass curtainwall offering an abundance of natural light and sweeping views of Regina
- Two (2) full levels of heated underground parking, plus additional parking in Hill Centre Parkade or Rose Street Parkade
- 3,000 square foot rooftop patio that offers building occupants exclusive, seasonal access to a phenomenal view from the height of Regina skyline
- State of the art fitness centre with locker and shower facilities
- 1,400 square foot conference centre
- Close proximity to thriving downtown restaurants, retail, hotels, and Cornwall Centre
- Major tenants include The Mosaic Company and TD Wealth
- Main floor retail including 20Ten Eatery and Canadian Western Bank
- Professionally managed and maintained by the Property Management team at Harvard Developments

AVAILABLE SPACE

SUITE 1500

6,046 SQUARE FEET
AVAILABLE JANUARY 2023

SUITE 1550

6,838 SQUARE FEET

SUITE 1600

12,829 SQUARE FEET

SUITES 1500, 1550 AND 1600 CAN BE COMBINED FOR A TOTAL OF
25,713 SQUARE FEET

RENTAL RATE |

NEGOTIABLE

OP COSTS & PROPERTY TAXES |

\$17.04 PSF PER ANNUM

RYANN BRAATEN, SALESPERSON

LEASING MANAGER, HARVARD DEVELOPMENTS

T | 306.777.0690

E | rbraaten@harvard.ca

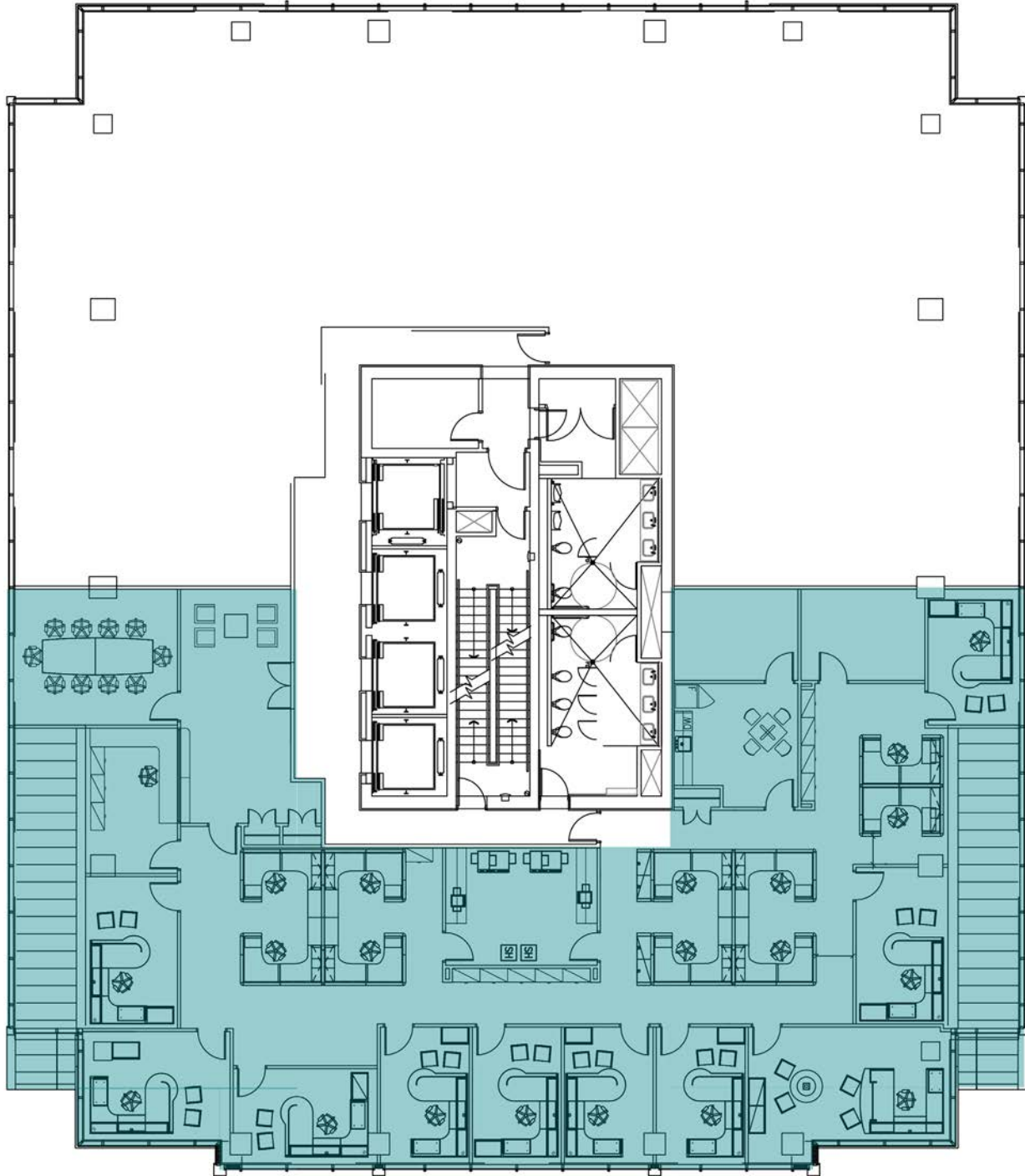
MOSAIC TOWER AT HILL CENTRE III

2010 12TH AVE. | REGINA, SK

SUITE 1500

6,046

SQUARE FEET



RYANN BRAATEN, SALESPERSON

LEASING MANAGER, HARVARD DEVELOPMENTS

T | 306.777.0690

E | rbraaten@harvard.ca

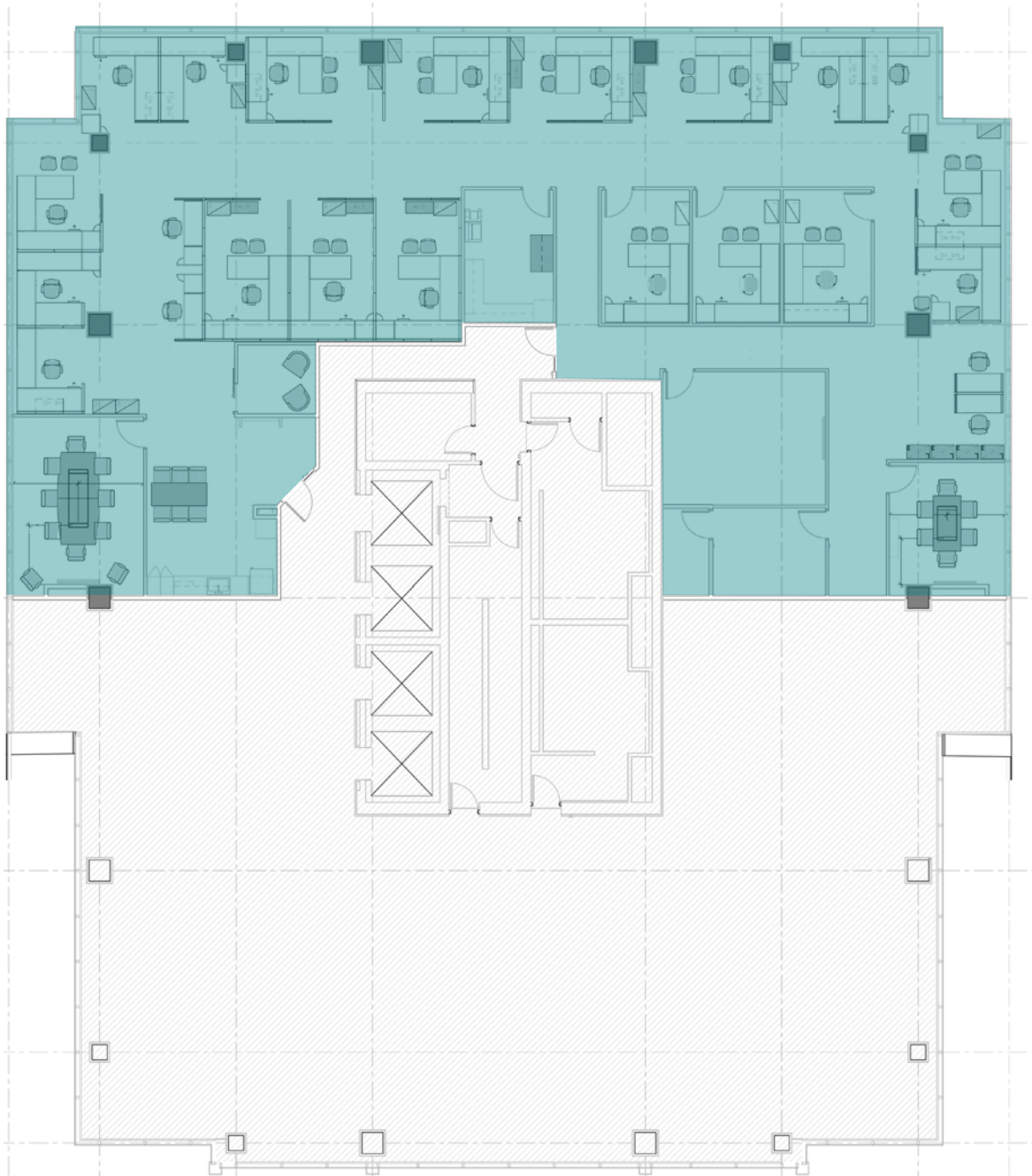
MOSAIC TOWER AT HILL CENTRE III

2010 12TH AVE. | REGINA, SK

SUITE 1550

6,838

SQUARE FEET



RYANN BRAATEN, SALESPERSON

LEASING MANAGER, HARVARD DEVELOPMENTS

T | 306.777.0690

E | rbraaten@harvard.ca

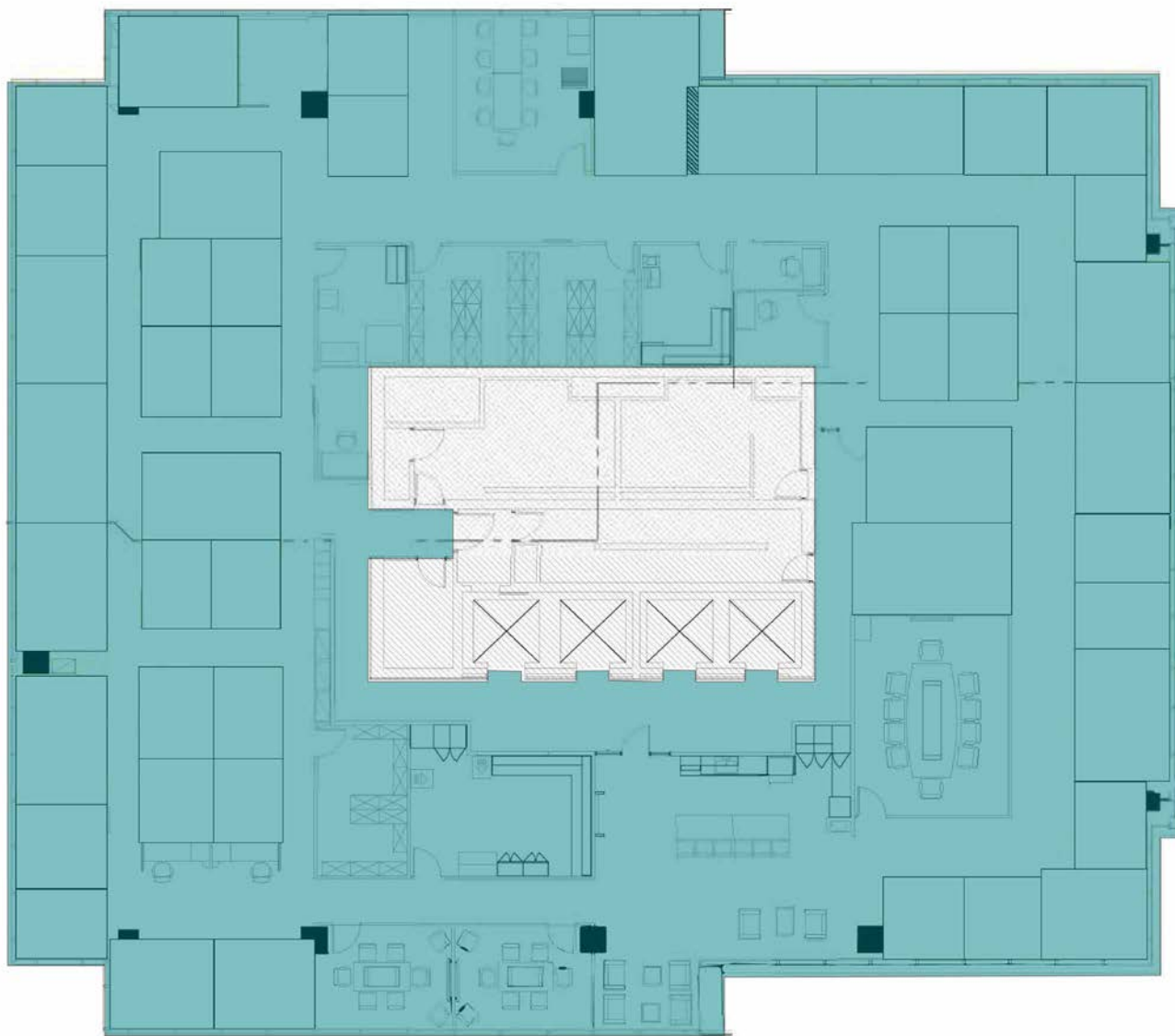
MOSAIC TOWER AT HILL CENTRE III

2010 12TH AVE. | REGINA, SK

SUITE 1600

12,829

SQUARE FEET



RYANN BRAATEN, SALESPERSON

LEASING MANAGER, HARVARD DEVELOPMENTS

T | 306.777.0690

E | rbraaten@harvard.ca