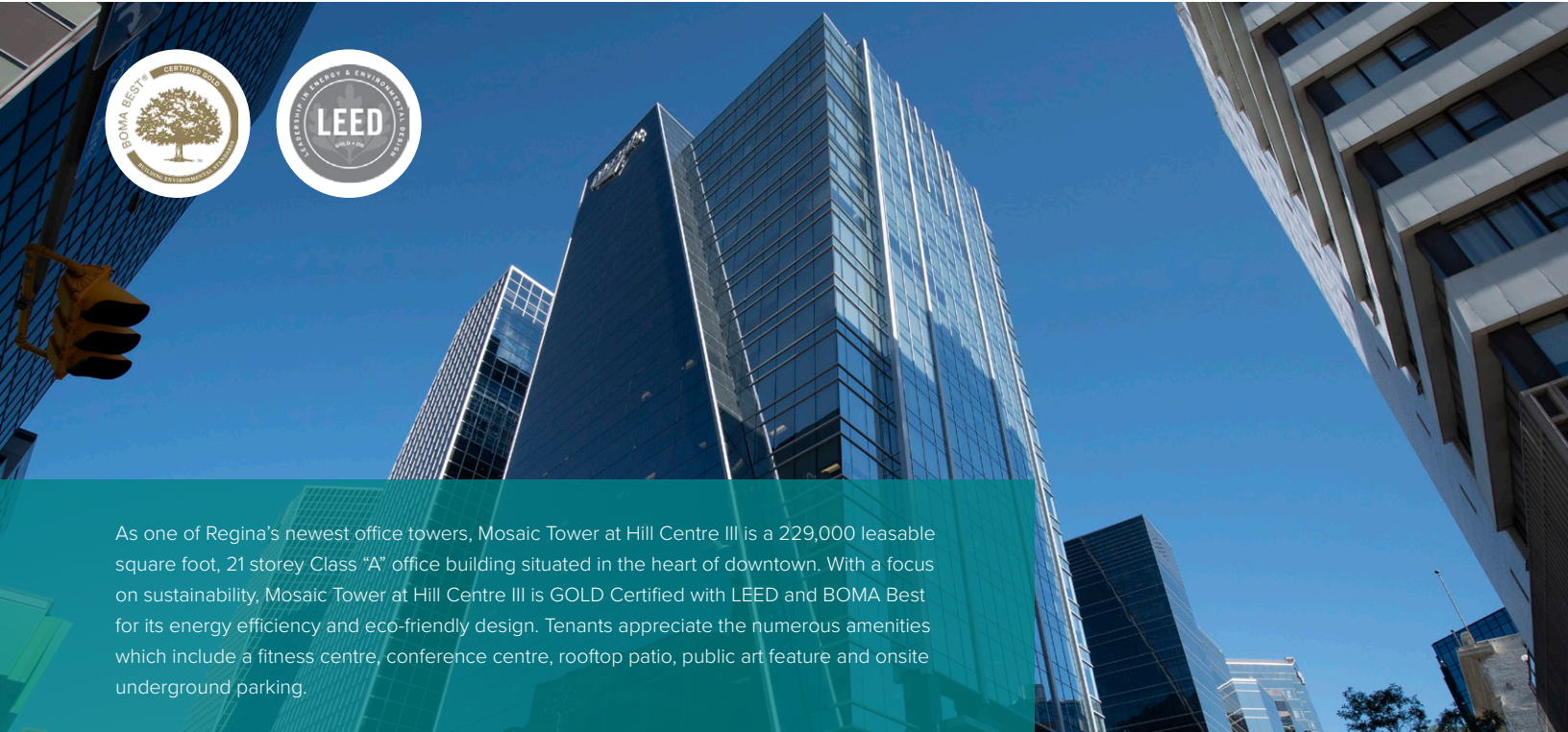


MOSAIC TOWER AT HILL CENTRE III

2010 12TH AVE. | REGINA, SK



As one of Regina's newest office towers, Mosaic Tower at Hill Centre III is a 229,000 leasable square foot, 21 storey Class "A" office building situated in the heart of downtown. With a focus on sustainability, Mosaic Tower at Hill Centre III is GOLD Certified with LEED and BOMA Best for its energy efficiency and eco-friendly design. Tenants appreciate the numerous amenities which include a fitness centre, conference centre, rooftop patio, public art feature and onsite underground parking.

BUILDING HIGHLIGHTS

- Exterior glass curtainwall offering an abundance of natural light and sweeping views of Regina
- Two (2) full levels of heated underground parking, plus additional parking in Hill Centre Parkade or Rose Street Parkade
- 3,000 square foot rooftop patio that offers building occupants exclusive, seasonal access to a phenomenal view from the height of Regina skyline
- State of the art fitness centre with locker and shower facilities
- 1,400 square foot conference centre
- Close proximity to thriving downtown restaurants, retail, hotels, and Cornwall Centre
- Major tenants include The Mosaic Company and TD Wealth
- Main floor retail including 20Ten Eatery and Canadian Western Bank
- Professionally managed and maintained by the Property Management team at Harvard Developments

AVAILABLE SPACE

SUITE 1550	6,838 SQUARE FEET
------------	-------------------

SUITE 1600	12,829 SQUARE FEET CAN BE COMBINED WITH SUITE 1550
------------	---

RENTAL RATE NEGOTIABLE

OP COSTS & PROPERTY TAXES \$18.47 PSF PER ANNUM
--

RYANN BRAATEN, SALESPERSON

LEASING MANAGER, HARVARD DEVELOPMENTS

T | 306.777.0690

E | rbraaten@harvard.ca

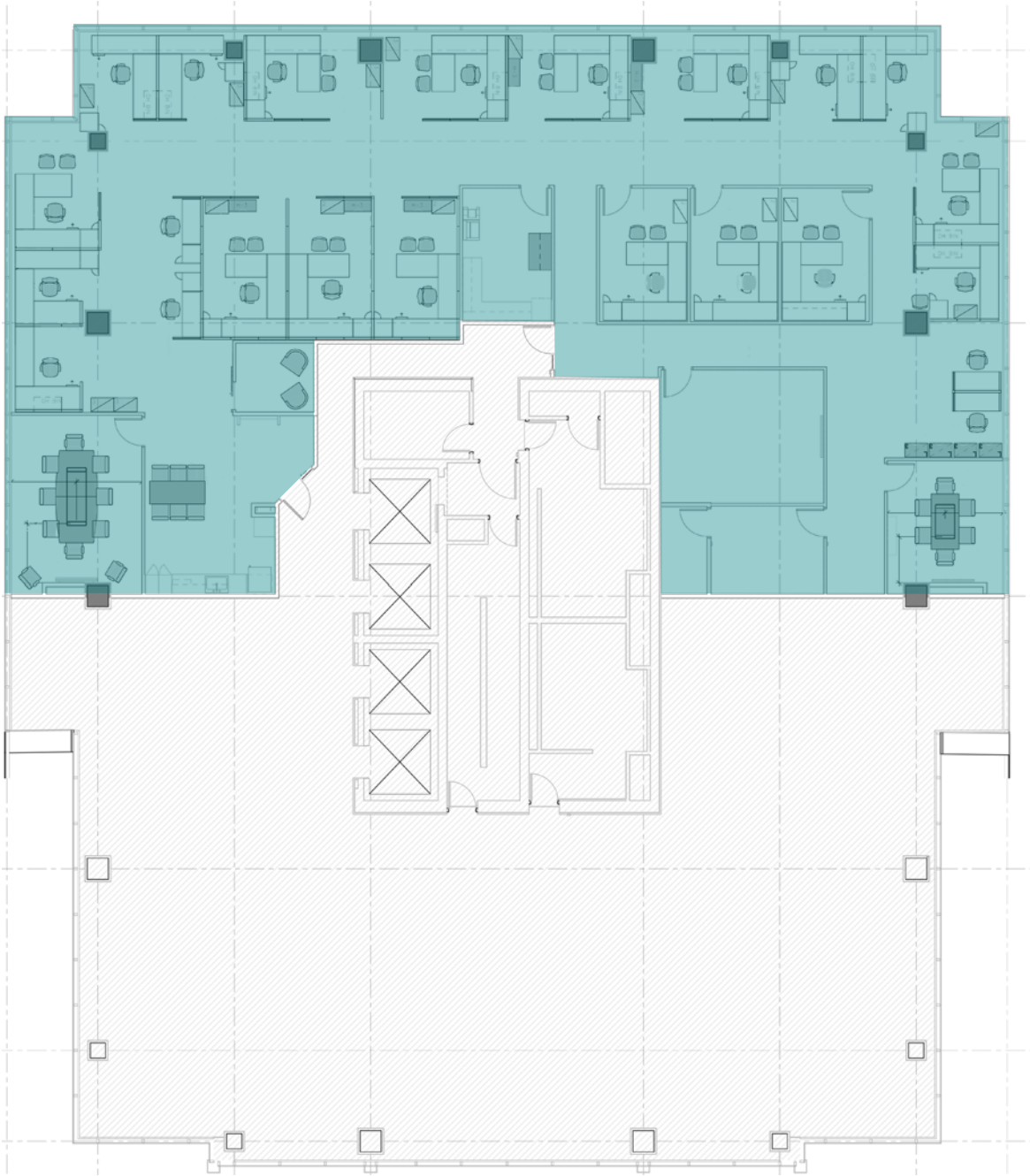
MOSAIC TOWER AT HILL CENTRE III

2010 12TH AVE. | REGINA, SK

SUITE 1550

6,838

SQUARE FEET



RYANN BRAATEN, SALESPERSON

LEASING MANAGER, HARVARD DEVELOPMENTS

T | 306.777.0690

E | rbraaten@harvard.ca

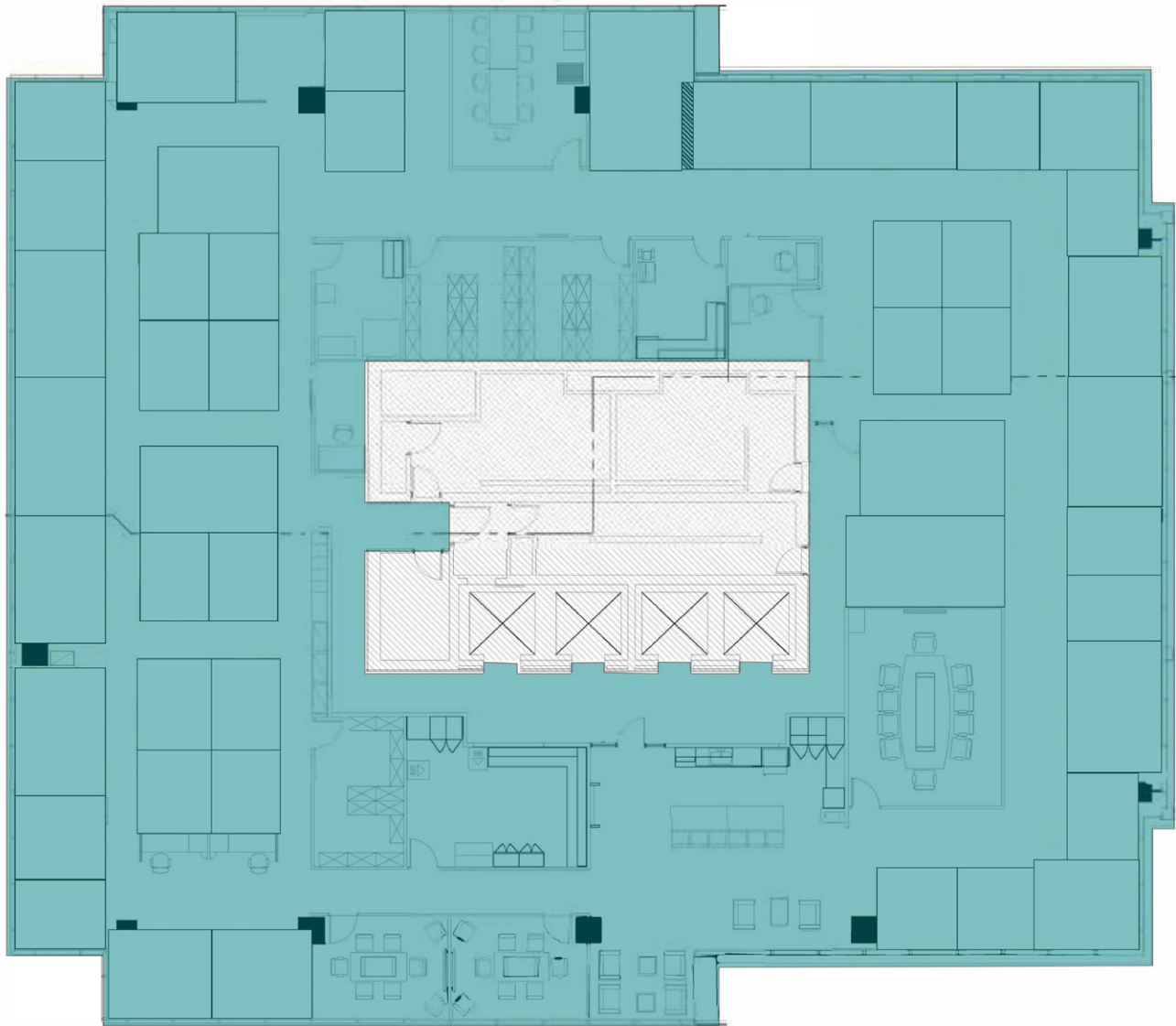
MOSAIC TOWER AT HILL CENTRE III

2010 12TH AVE. | REGINA, SK

SUITE 1600

12,829

SQUARE FEET



RYANN BRAATEN, SALESPERSON

LEASING MANAGER, HARVARD DEVELOPMENTS

T | 306.777.0690

E | rbraaten@harvard.ca