

# HILL CENTRE TOWER I

1874 SCARTH ST. | REGINA, SK



Located in the heart of Downtown, Hill Tower I is one of many recognizable staples in the Regina skyline. Situated on the corner of Scarth Street and 12th Avenue, Hill Centre I is a Class A office tower that was designed in conjunction with Hill Tower II. With a unique design and construction, these buildings boast inspirational architecture and high performance building systems.

## BUILDING HIGHLIGHTS

- Connected to Regina's climate controlled pedway system which links to nine downtown office buildings, Casino Regina, The Delta Hotel & Convention Centre, and The Cornwall Centre
- Major tenants include MLT Aikins, Ministry of Justice, Yara Belle Plaine, Harvard Developments Corporation
- Excellent access to all major transit routes
- Close proximity to thriving downtown restaurants, retail, hotels, and Cornwall Centre
- Professionally managed and maintained by the Property Management team at Harvard Developments
- 24/7 live camera monitoring, security guard presence, card access system tied into front doors, elevators and tenants spaces linked to live cameras, safe walk programs, etc.

## AVAILABLE SPACE

UNIT 100

6,861 SQUARE FEET

UNIT 1840

2,719 SQUARE FEET

RENTAL RATE |  
NEGOTIABLE

OP COSTS & PROPERTY TAXES |  
\$18.50 PSF PER ANNUM

**RYANN BRAATEN, SALESPERSON**

LEASING MANAGER, HARVARD DEVELOPMENTS

**T** | 306.777.0600

**E** | [rbraaten@harvard.ca](mailto:rbraaten@harvard.ca)

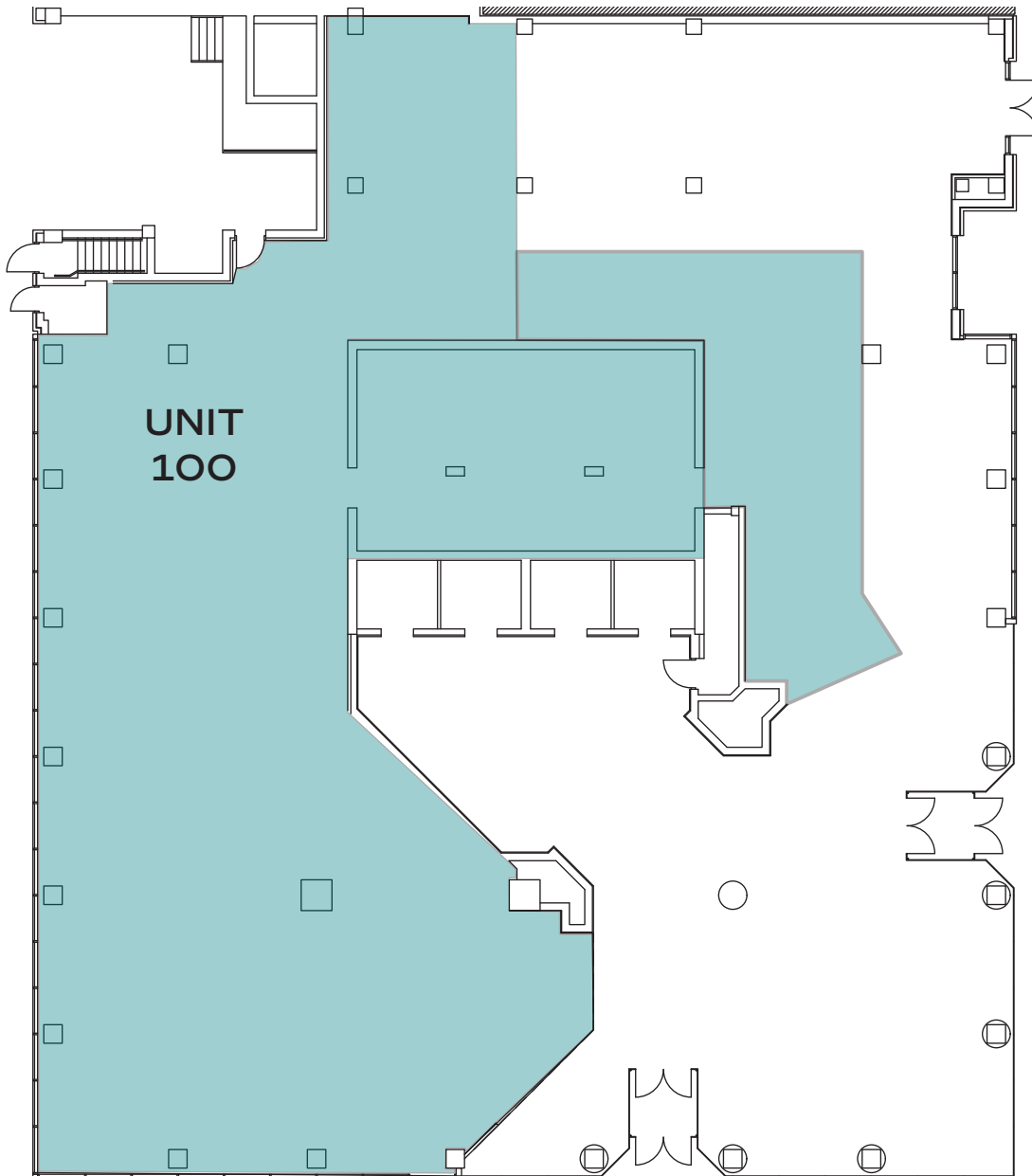
# HILL CENTRE TOWER I

1874 SCARTH ST. | REGINA, SK

## SUITE 100

6,861

SQUARE FEET



FLOOR PLAN IS APPROXIMATE

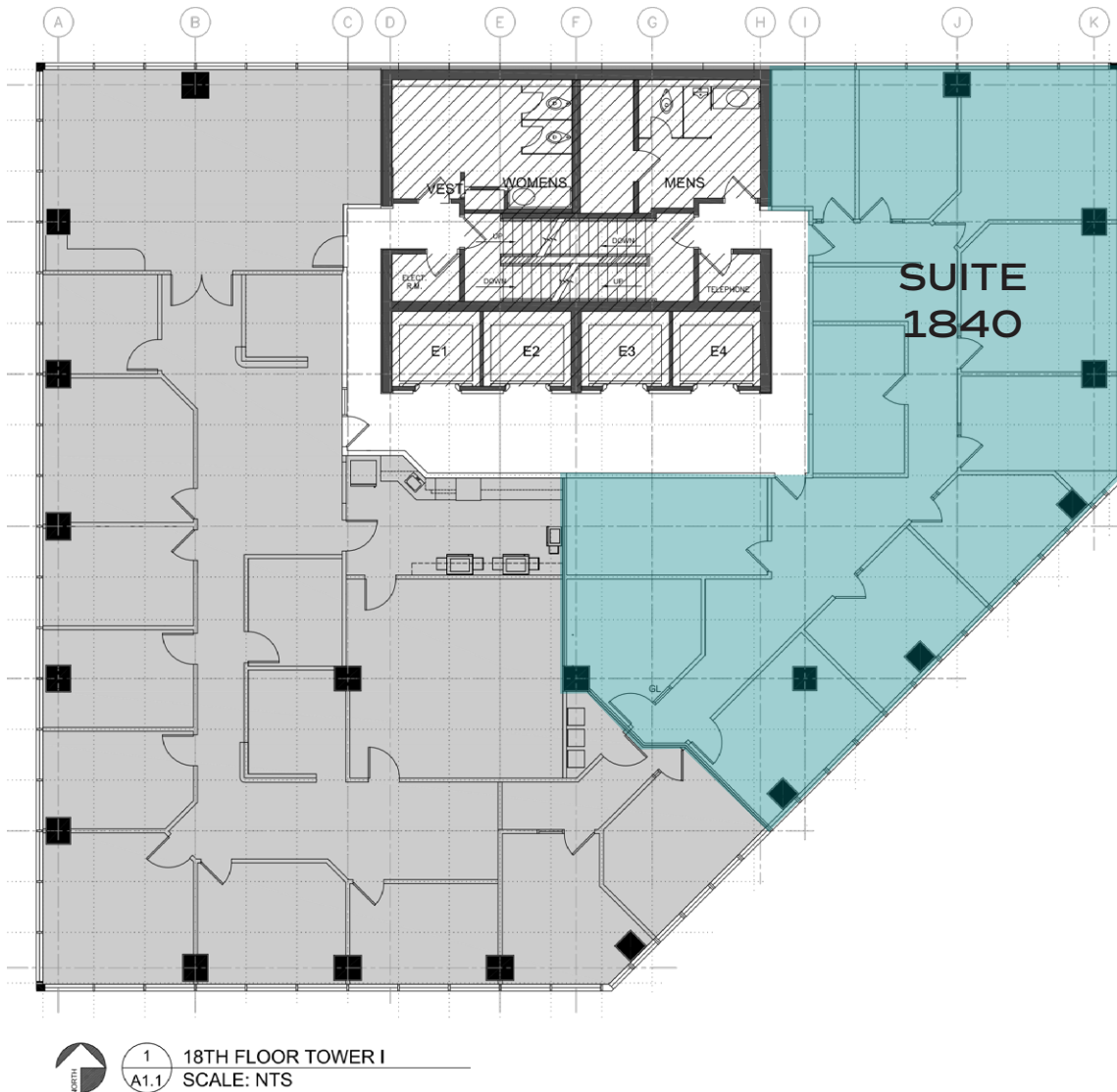
# HILL CENTRE TOWER I

1874 SCARTH ST. | REGINA, SK

## SUITE 1840

### 2,719

SQUARE FEET



THIS PLAN DOES NOT REFLECT THE CURRENT BUILD OUT  
FLOOR PLAN IS APPROXIMATE