

# HILL CENTRE TOWER I

1874 SCARTH ST. | REGINA, SK



Located in the heart of Downtown, Hill Tower I is one of many recognizable staples in the Regina skyline. Situated on the corner of Scarth Street and 12th Avenue, Hill Centre I is a Class A office tower that was designed in conjunction with Hill Tower II. With a unique design and construction, these buildings boast inspirational architecture and high performance building systems.

## BUILDING HIGHLIGHTS

- Connected to Regina's climate controlled pedway system which links to nine downtown office buildings, Casino Regina, The Delta Hotel & Convention Centre, and The Cornwall Centre
- Major tenants include MLT Aikins, Ministry of Justice, Yara Belle Plaine, Harvard Developments Inc.
- Excellent access to all major transit routes
- Close proximity to thriving downtown restaurants, retail, hotels, and Cornwall Centre
- Professionally managed and maintained by Harvard Property Management
- 24/7 live camera monitoring, security guard presence, card access system tied into front doors, elevators and tenants spaces linked to live cameras, safe walk programs, etc.

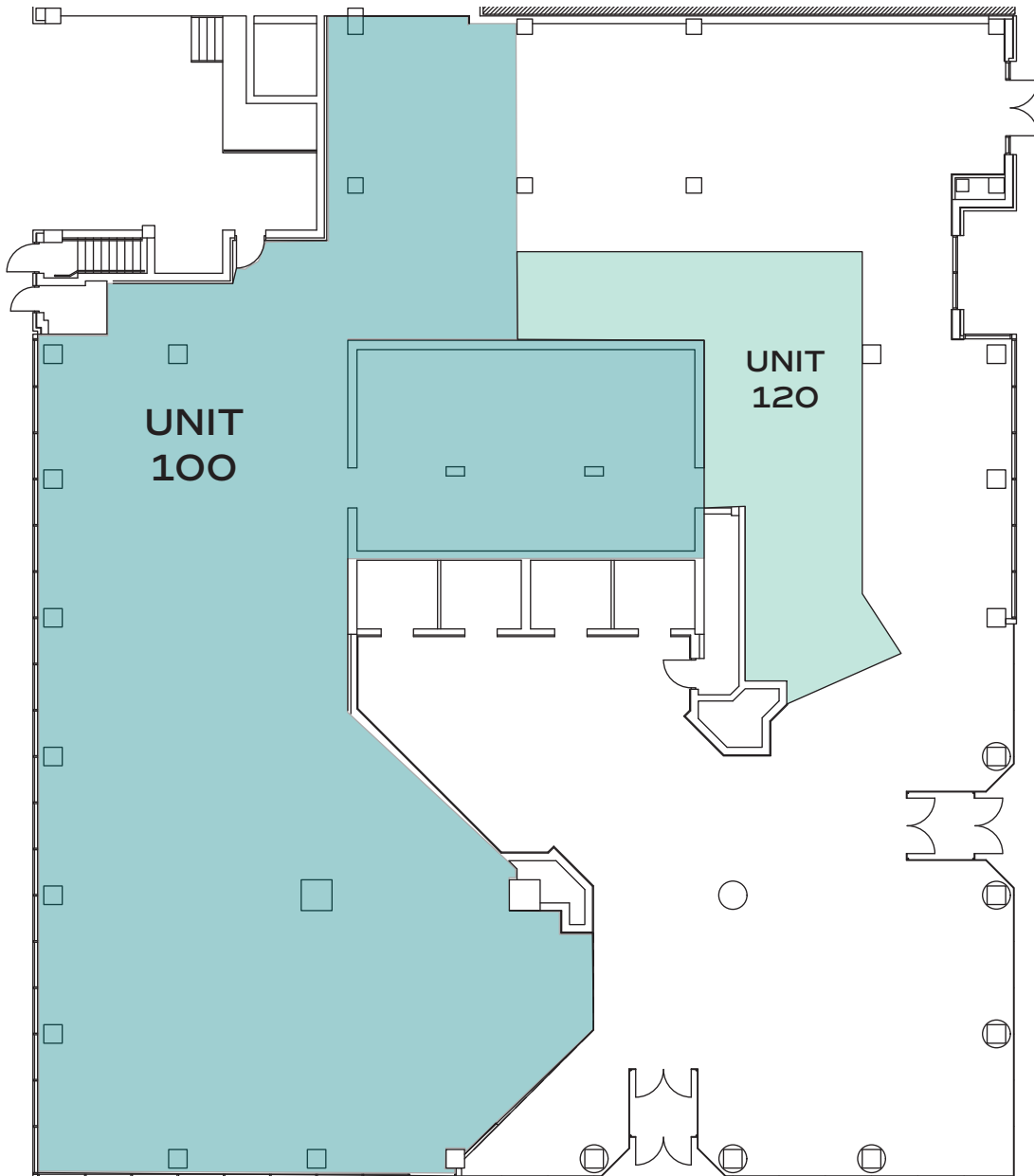
## AVAILABLE SPACE

UNIT 100	6,861 SQUARE FEET
UNIT 1840	2,719 SQUARE FEET
RENTAL RATE   NEGOTIABLE	OP COSTS & PROPERTY TAXES   \$18.50 PSF PER ANNUM

### RYANN BRAATEN

LEASING MANAGER, HARVARD REAL ESTATE INC

T | 306.777.0690 E | rbraaten@harvard.ca



FLOOR PLAN IS APPROXIMATE

**RYANN BRAATEN**

LEASING MANAGER, HARVARD REAL ESTATE  
INC

T | 306.777.0690

E | [rbraaten@harvard.ca](mailto:rbraaten@harvard.ca)

# HILL CENTRE TOWER I

1874 SCARTH ST. | REGINA, SK

## SUITE 1840

2,719  
SQUARE FEET



1 18TH FLOOR TOWER I  
A1.1 SCALE: NTS

**RYANN BRAATEN**

LEASING MANAGER, HARVARD REAL ESTATE  
INC

T | 306.777.0690

E | [rbraaten@harvard.ca](mailto:rbraaten@harvard.ca)