

# 1822 SCARTH STREET

REGINA, SK



## BUILDING HIGHLIGHTS

- Located in the heart of downtown Regina, on Scarth Street, between 11th and 12th Avenues.
- Frontage onto the downtown pedway system, and adjacent to the Hill Centre Parkade, providing foot traffic and visibility, alongside an abundance of covered parking stall opportunities.
- Pedway access to the Cornwall Centre, via the Bank of Montreal building, in addition to the Hill Centre Tower I, II, and III via the Hill Centre Parkade.
- Shared common area on the 2nd floor, which features men's and women's washrooms.
- Major tenants in the vicinity include Bank of Montreal, The Globe Theatre, SaskTel, SGI, CIBC, FCC.
- Excellent access to all major transit routes.
- Close proximity to all downtown amenities, restaurants, retail and hotels.
- Professionally managed and maintained by the Property Management team at Harvard Developments.

## AVAILABLE SPACE

|                             |   |
|-----------------------------|---|
| SUITE 200                   | 2,835 SQUARE FEET   |
| RENTAL RATE  <br>NEGOTIABLE | OP COSTS & PROPERTY TAXES (2023)<br>\$15.36 PSF PER ANNUM |

### CHANTAL BLAISDELL

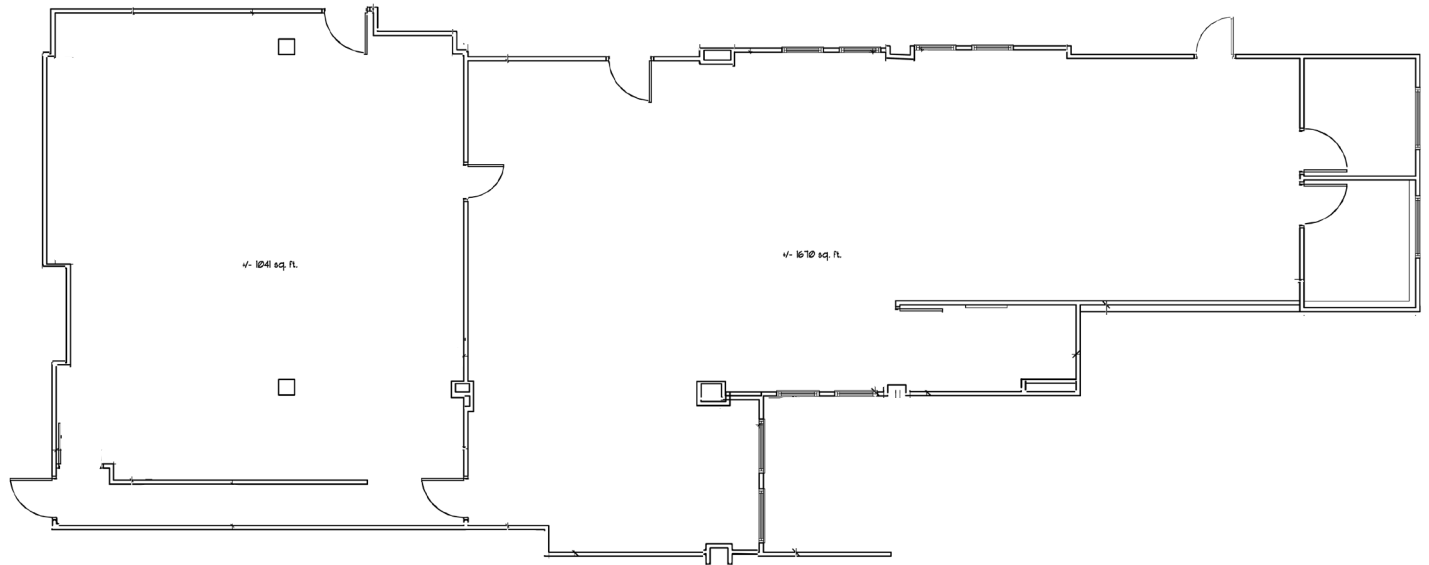
LEASING MANAGER, HARVARD DEVELOPMENTS

T | 306.777.0641 E | cblaisdell@harvard.ca

# 1822 SCARTH STREET

REGINA, SK

2,835  
SQUARE FEET



EXISTING FLOOR PLAN

**CHANTAL BLAISDELL**

LEASING MANAGER, HARVARD DEVELOPMENTS

T | 306.777.0641

E | [cblaisdell@harvard.ca](mailto:cblaisdell@harvard.ca)