

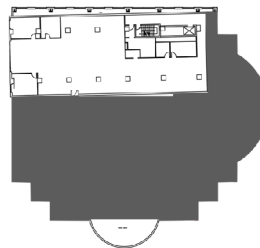
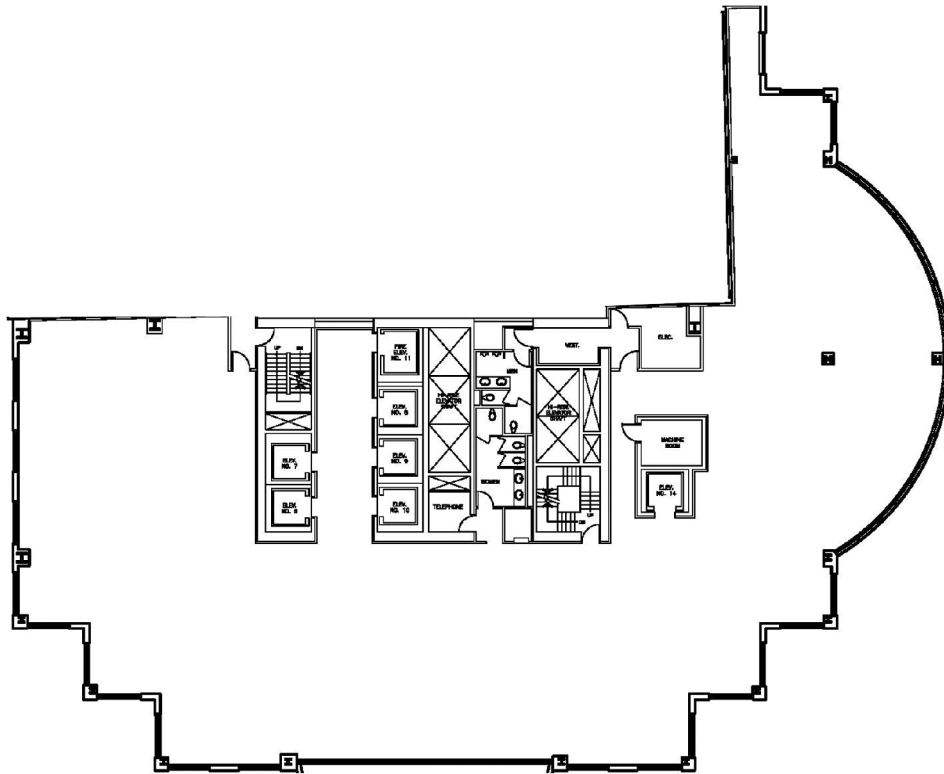
# 201

Suite

# 400

# 10,840

square feet



KEY PLAN

Full floor available January 2021. Fully built out office space offering several offices, ample work station areas, board room, meeting rooms, kitchen area and file room storage.

Space can also be provided in base shell condition.

Excellent views of famous Portage & Main intersection and the 201 Portage Avenue Courtyard.