

# PARK CENTRE

1230 BLACKFOOT DR. | REGINA, SK



Located on the south corner of Wascana Parkway and Hillsdale Street, Park Centre is a rare gem that offers both beautiful office space amidst a park-like setting. Just steps away from key landmarks like the University of Regina and Conexus Arts Centre, Park Centre is also surrounded by the picturesque Wascana Park.

Park Centre has undergone extensive renovations which include: new exterior cladding, windows, upgraded LED lights throughout, new blinds. The building lobby and elevator cab underwent a refresh and modernization. Bathrooms and shower room in the building have been fully renovated. The underground parkade received major upgrades: new ramp, epoxy coating, paint, and LED lighting. At grade parking has upgraded parking pedestals and LED lights. The property has also been re-landscaped.

## BUILDING HIGHLIGHTS

- Located on the south corner of the intersection of Wascana Parkway and Hillsdale Street.
- Flanked on the North and West by Regina's beautiful Wascana Park.
- Three storey, 53,330 square foot high-end first-class suburban office building
- Atrium and Terrace design provide a peaceful atmosphere in a park-like setting.
- Underground parking, surface parking, and designated areas for customer parking.
- Major tenants include: TD Greystone Asset Management, Connor Clark and Lunn Private Capital.

## AVAILABLE SPACE

MAIN FLOOR	11,391 SQUARE FEET *CAN BE SUBDIVIDED
SUITE 190	3,419 SQUARE FEET
RENTAL RATE   NEGOTIABLE	OP COSTS & PROPERTY TAXES   \$18.53 PSF PER ANNUM

**RYANN BRAATEN, SALESPERSON**

LEASING MANAGER, HARVARD DEVELOPMENTS

T | 306.777.0690

E | [rbraaten@harvard.ca](mailto:rbraaten@harvard.ca)

# PARK CENTRE

1230 BLACKFOOT DR. | REGINA, SK

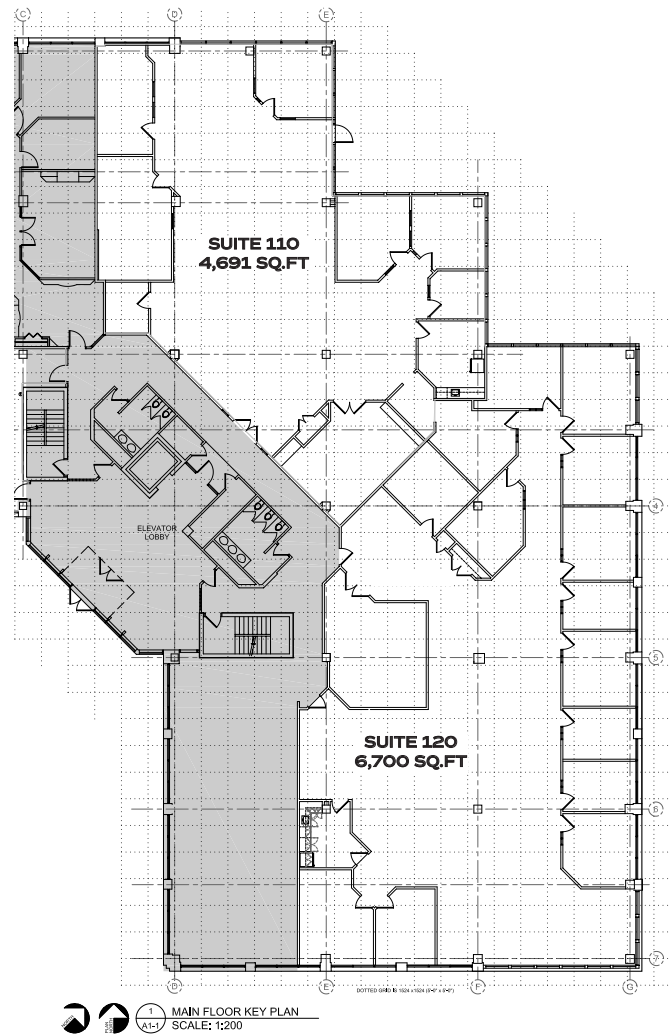
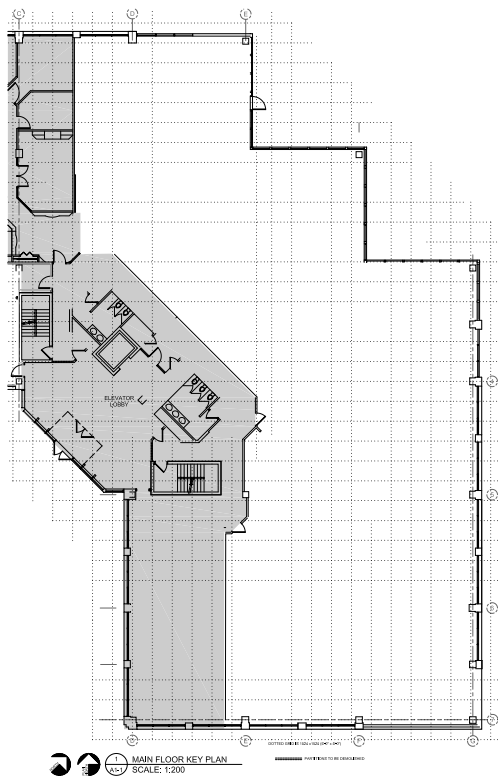
## MAIN FLOOR

11,391

SQUARE FEET

### CONCEPT FLOOR PLAN

### OPEN FLOOR PLAN



CAN BE SUBDIVIDED INTO A VARIETY OF SQUARE FOOTAGE OPTIONS.

MAIN FLOOR PATIO AREAS AVAILABLE

**RYANN BRAATEN, SALESPERSON**

LEASING MANAGER, HARVARD DEVELOPMENTS

**T** | 306.777.0690

**E** | [rbraaten@harvard.ca](mailto:rbraaten@harvard.ca)

# PARK CENTRE

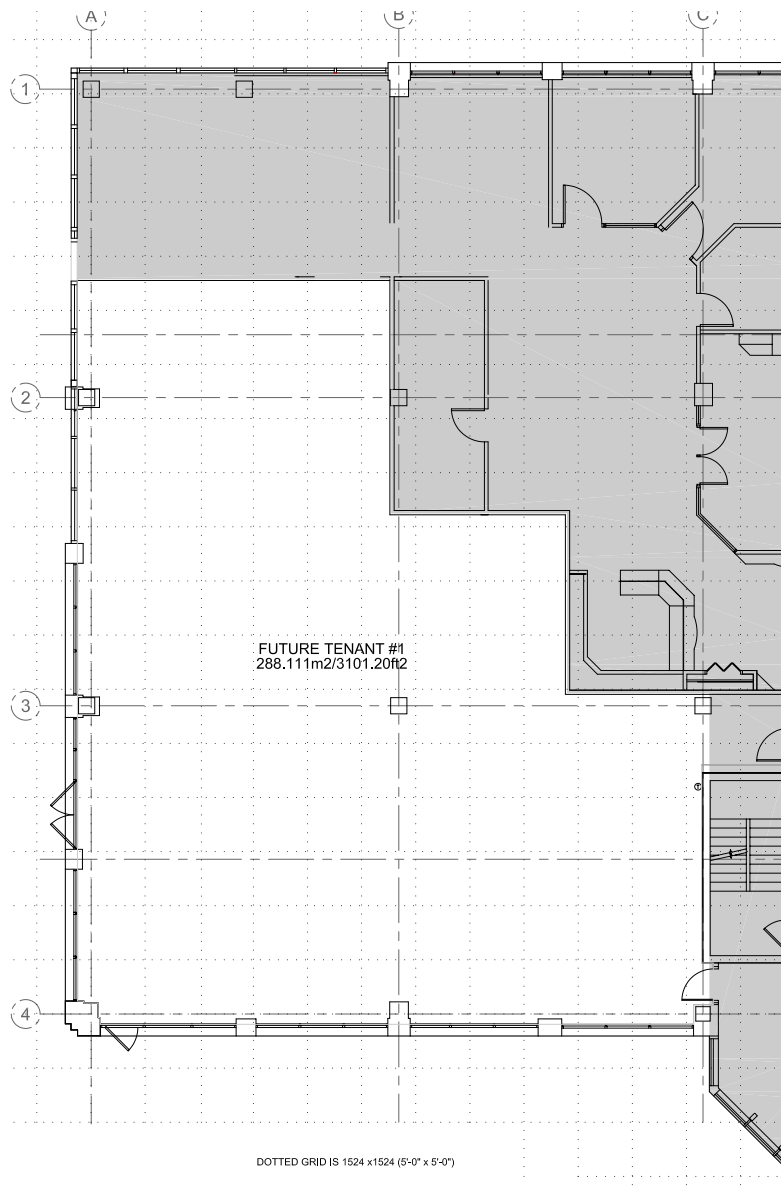
1230 BLACKFOOT DR. | REGINA, SK

## SUITE 190

3,419

SQUARE FEET

### CONCEPT FLOOR PLAN



1 MAIN FLOOR KEY PLAN

A1-1 SCALE: 1:200

**RYANN BRAATEN, SALESPERSON**

LEASING MANAGER, HARVARD DEVELOPMENTS

**T** | 306.777.0690

**E** | [rbraaten@harvard.ca](mailto:rbraaten@harvard.ca)