



SHOPPES

ON HAMILTON



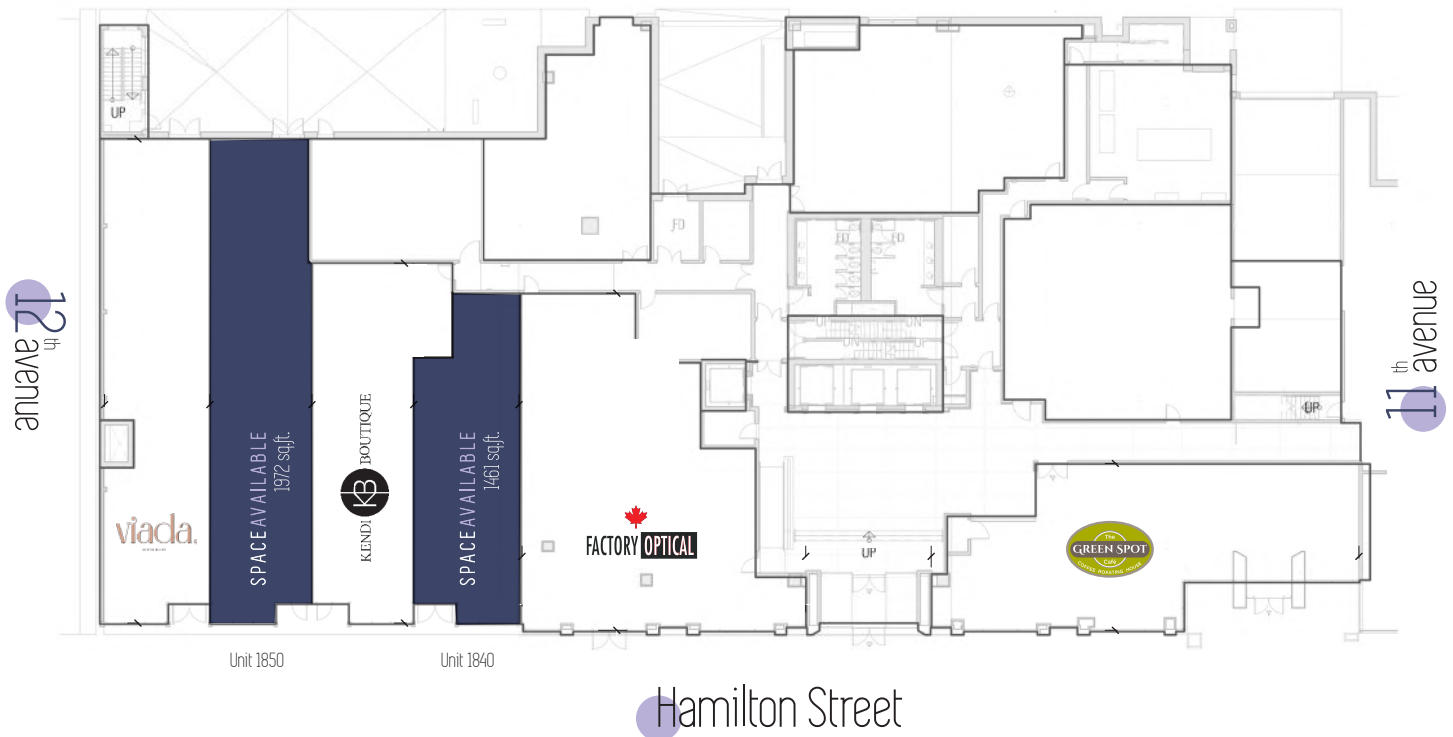
claim your place on

YQR's *fashion runway.*



Available units

Unit 1850 - 1,972 sq.ft.
Unit 1841 - 1,461 sq.ft.



Property features

- + Newer construction with modern storefronts
- + 20' of store frontage
- + 16' ceiling heights
- + Rear-loading doors
- + Industry-leading mechanical system
- + Enhanced sidewalks and streetscape

Location features

- + Located on Hamilton Street between 11th & 12th Avenue, one of Regina's most established retail corridors.
- + Adjacent to Regina's premier shopping centre destination - the Cornwall Centre. 550,000 sq.ft. regional mall occupying over 90 stores that annually attracts over 8.4 million shoppers to downtown Regina
 - o Vehicular traffic of 4,100/day
 - o Pedestrian traffic of 3,000/day
- + Convenient access to Regina's climate controlled pedway system which connects nine downtown office buildings, Casino Regina, and the Cornwall Centre
- + 4 million sq.ft. of office space in the surrounding area
- + Downtown day-time population, approximately 32,000
- + 20 thriving licensed full-service pubs and restaurants
- + 10 nearby hotels that welcome over 500,000 guests annually
- + Adjacent to City Square Plaza and Victoria Park - Regina's premiere outdoor cultural events facility and hub of pedestrian linked activity.

Neighbouring retailers

Starbucks
Lululemon
FYI Optical

 *Viada Studio*
Jessica Bridal
Deluxe Tailors
 *Kendi Boutique*
 *Factory Optical*

Cornwall Optical
Olivers Menswear

 *The Green Spot Cafe*
 *Zöe Shoes + Objects*
 *Dean Renwick Designs*
NWL Contemporary Dresses
 *Colin O'Brian Man's Shoppe*

90+ stores located in the Cornwall Centre.





For leasing inquiries:

Ryann Braaten

Leasing Manager, Harvard Developments Inc.
306.777.0690 \ \ rbraaten@harvard.ca

 @shoppesonhamilton